



MONTHLY MEMBERSHIP PROGRESS REPORT

Results as of: 6/30/2015

Multiple District 6

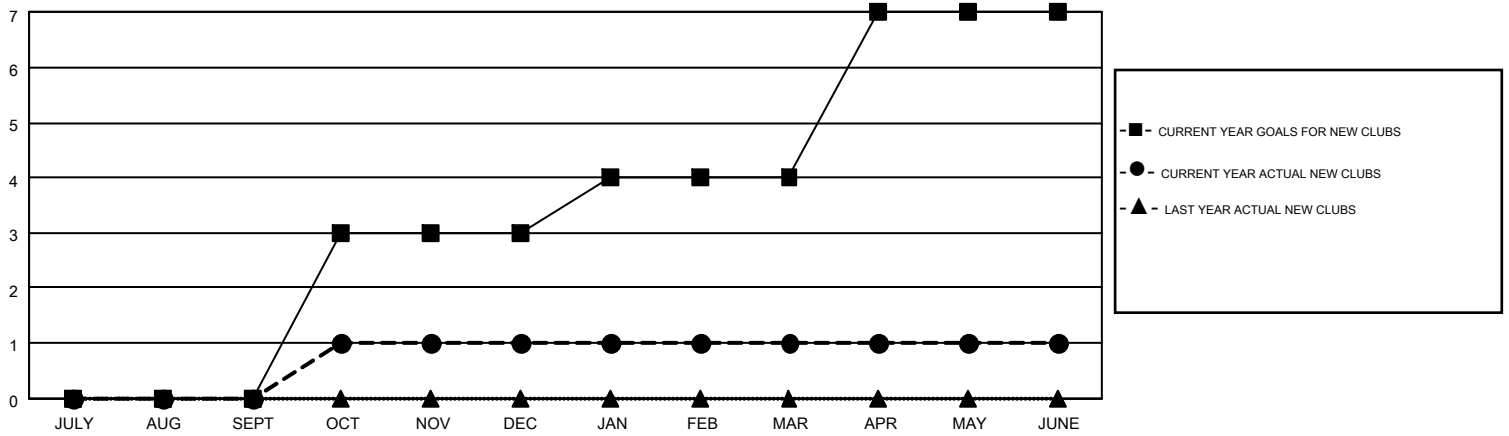
LOCATION: COLORADO

GMT: KENNETH SCHWOLS

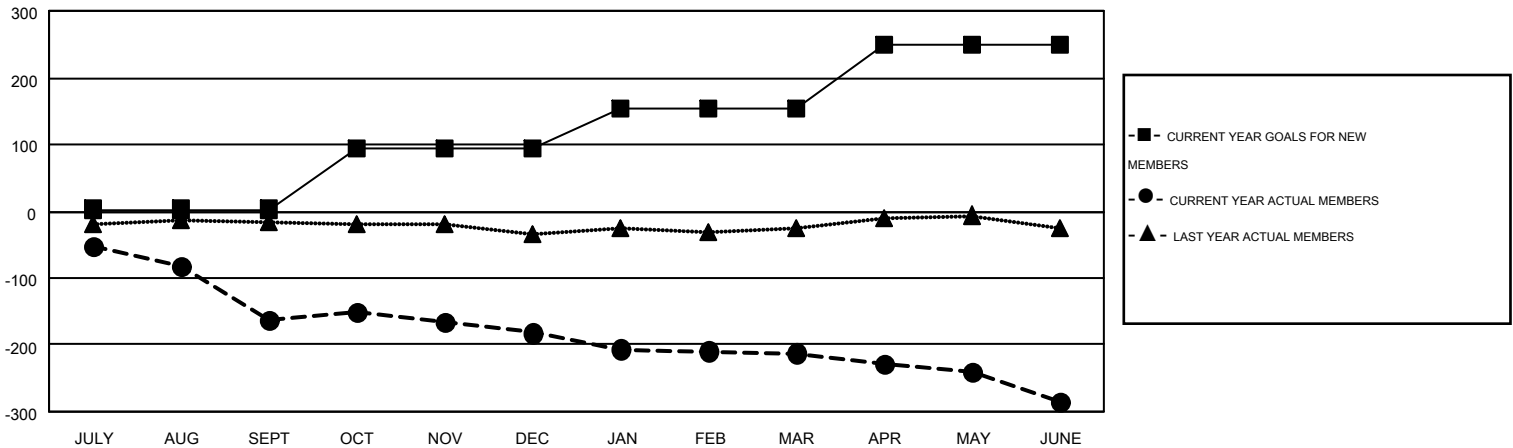
GMT CA 1

| Clubs | | | | | Members | | | | |
|-----------------------|---------------|-----------|---------------|---------------|-----------------------|-----------------|-------------------------------|-----------------|---------------|
| RESULTS FOR 2014-2015 | | | | | RESULTS FOR 2014-2015 | | | | |
| QUARTER | NEW CLUB GOAL | NEW CLUBS | DROPPED CLUBS | NET GAIN/LOSS | QUARTER | NEW MEMBER GOAL | CHARTER AND NEW MEMBERS ADDED | DROPPED MEMBERS | NET GAIN/LOSS |
| JULY/AUG/SEPT | 0 | 0 | 1 | -1 | JULY/AUG/SEPT | 3 | 58 | 220 | -162 |
| OCT/NOV/DEC | 3 | 1 | 5 | -4 | OCT/NOV/DEC | 90 | 139 | 159 | -20 |
| JAN/FEB/MAR | 1 | 0 | 0 | 0 | JAN/FEB/MAR | 61 | 70 | 100 | -30 |
| APR/MAY/JUNE | 3 | 0 | 1 | -1 | APR/MAY/JUNE | 96 | 89 | 161 | -72 |

GOALS AND ACTUAL NEW CLUBS CUMULATIVE



GOALS AND ACTUAL MEMBERS CUMULATIVE



| | | | |
|------------------------|---|----------------------------------|----------------|
| DROPPED CLUBS: 7 | 88 CLUBS OF 142 ADDED 1 OR MORE NEW MEMBERS | <u>GENDER DISTRIBUTION</u> | |
| <u>DROPPED MEMBERS</u> | | MALE | 2,292 (67.75%) |
| DECEASED | 65 | FEMALE | 1,091 (32.25%) |
| CLUB CANCELLED | 35 | <u>FAMILY UNIT MEMBERS</u> 764 | |
| OTHER | 540 | <u>HEAD OF HOUSEHOLD</u> 371 | |
| TOTAL | 640 | <u>NON-HEAD OF HOUSEHOLD</u> 393 | |

[CLICK HERE FOR HEALTH ASSESSMENT DATA](#)